



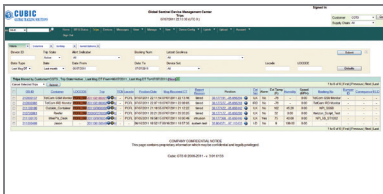
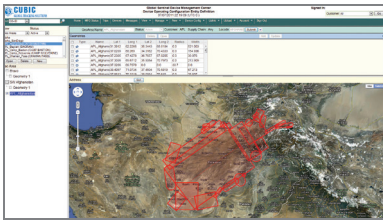
CONTAINER TRACKING AND MONITORING SOLUTION (CTMS)

Providing Logistics Intelligence & Intrusion Detection

Achieve situational awareness of the dry containers within your enterprise by monitoring assets with the Global Sentinel® GS-5B. Developed by RSAE Labs Global Tracking Solutions, the Global Sentinel is a flexible system that provides worldwide “infrastructure-free” tracking, monitoring and security for container management. Our system continuously monitors and immediately reports the position, status and security of high-risk containers across the entire intermodal transportation network anytime, anywhere around the world. Cargo containers are extremely vulnerable to loss and pilferage. RSAE Labs Global Tracking Solutions has a highly reliable solution to keep your valuable and high risk cargo moving and safe.

The RSAE Labs Container Tracking & Monitoring Solution (CTMS) is designed as a contracted level of service (devices, installation, monitoring, analysis and reverse logistics). The level of service can vary depending upon your requirements and can be configured to meet your needs. The service approach allows for a per trip or per month lease option, and a purchase option is also available.

*Actionable Information to
Manage Your Operations*



The RSAE Labs CTMS uses field-proven Global Sentinel GS-5B devices. The devices can use satellite and cellular communications, specialized sensors and a unique forensic data analysis to differentiate between someone tampering with a container and someone making a critical breach. Unplanned route deviations are also identified.

Our Container Tracking & Monitoring Solution combines automated and human data analysis to ensure only actionable events are reported. If the device detects an anomaly, it sends a message and Global Sentinel data and visualization applications help logisticians identify breached containers or misrouted containers.

The GS-5B devices pass information over secure channels to RSAE LABs Global Tracking Solutions Device Management Center (DMC). Only authorized parties have ongoing knowledge of the asset's conditions and location in near, real time. If an unplanned event does occur, authorized users receive notification through e-mail or an SMS text message.

RSAE Lab's Adaptive Container Monitoring (ACM) algorithms control the Global Sentinel GS-5B devices, which can also be updated remotely to accommodate different cargo contents or route changes. Tailored reporting controls power use of the device's batteries, as well as cost. You can expect to get up to five years of service or 5,000 reports from each device.

RSAE Labs Global Tracking Solutions' Global Sentinel GS-5B and CTMS service provide a reliable, dependable end-to-end solution to monitor and manage your assets.

Key Features and Benefits

Service Features

- û A configurable service based on customer requirements
- û Option to buy or lease, with pricing based upon the scope of services provided
- û Provides customers a flexible option to procure capabilities

Global Sentinel GS-5B

- Rugged field-tested devices with long life reporting capacity
- Compatible with standard cargo containers
- Adaptive Container Monitoring (ACM) ensures door and container security
- Redundant global coverage with satellite and cellular communications
- Two-way (duplex) AES-128 encrypted communications
- Up to 2,000 geofencing transitions to adapt to operations across the globe
- Easy installation and activation in the field, with no special infrastructure or tools required

Device Management Center

- Secure server used to configure, manage, maintain and monitor GS-5B devices
- Continuous monitoring by high availability servers processing device data
- Data feeds to customers using standards such as secure sockets and XML
- Customized notifications and reports to authorized users through e-mail and SMS text message
- Application Programmer Interface (API) for customers to update and remotely, manage individual GS-5B devices



PO Box 15922 • Panama City, Florida • 32406 •
USA - info@RsaeLabs.com